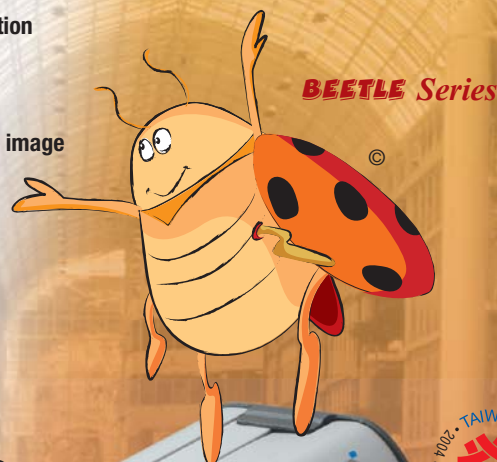


Professional DSP Color Vari-Focal Camera

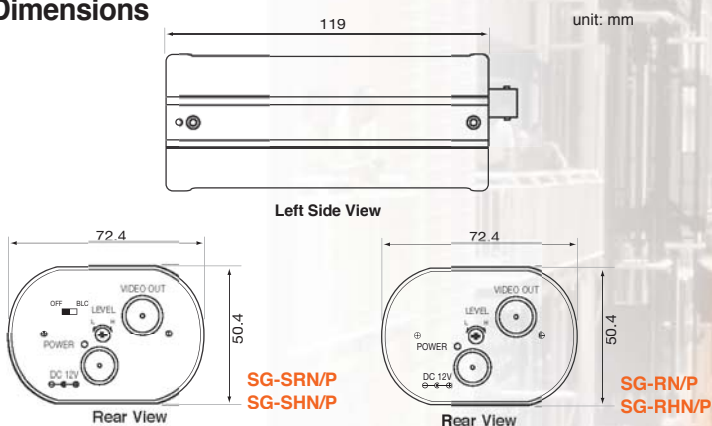


General Feature

- Provide cost-effective, high technology solution for your CCTV application
- Advanced CCTV technology to meet the demand of new and ever-changing application
- Digital Signal Processing (DSP) minimizes color noise by the camera when viewing patterned object
- 1/3" Interline transfer CCD with outstanding horizontal resolution 330 & 480 TVL
- Advanced Auto Tracking White Balance (ATW) function provides the natural picture image
- High sensitivity and minimum illumination low to 0.2Lux/F1.2
- Advanced digital adaptive Back Light Compensation (BLC) capability
- Build in high performance 3~9mm/F1.2 vari-focal lens Auto IRIS DC Drive
- Combine with patent wall mount bracket



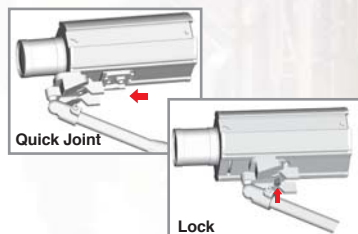
Dimensions



Installation



Fast Bracket
(Patent Application in Process)



Patent Authorized

1/3" Color CCD Vari-Focal Camera Specification

Model	SG-SRN SG-SRP	SG-SHN SG-SHP	SG-RN SG-RP	SG-RHN SG-RHP
Chip Brand	SONY		SHARP	
Effective Pixels	NTSC: 510(H) x 492(V) PAL: 500(H) x 582(V)	NTSC: 768(H) x 494(V) PAL: 752(H) x 582(V)	NTSC: 512(H) x 492(V) PAL: 512(H) x 582(V)	NTSC: 768(H) x 494(V) PAL: 752(H) x 582(V)
SYNC. System	Internal			
Resolution	More Than 330 TV Line	More Than 480 TV Line	More Than 330 TV Line	More Than 480 TV Line
Minimum Illumination	0.2 Lux / F1.2 / 50IRE	0.3 Lux / F1.2 / 50IRE	0.4 Lux / F1.2 / 50IRE	1.0 Lux / F1.2 / 50IRE
S/N Ratio (AGC OFF)	More Than 48dB			
Gamma Correction	0.45			
Gain Control	Auto			
White Balance	Auto (2500°K ~ 9500°K)			
Back Light Compensation	ON / OFF Switchable		-	
Exposure	Auto IRIS Lens			
Video Output	1.0 Vp-p Composite (75Ω LOAD)			
Supply Voltage	DC 12V +/- 10%			
Power Consumption	155mA	220mA	140mA	150mA
Operation Temp.	-10°C~50°C			
Lens Mount Type	3mm~9mm/F1.2 Vari-Focal Lens Auto IRIS DC Drive			
Patent Wall Mount Bracket	Yes			
Dimension (WxHxD)	72.4 x 50.4 x 119 mm			
Weight (g)	370	380	370	

* Specifications subject to change without notice.