

D.S.P. Color Dome Camera

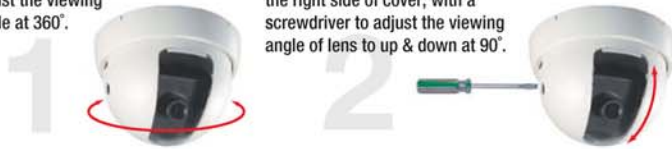


DR~

- Tilt angle adjust uncovering
- SONY CCD
- 330TVL / 480TVL / 520TVL above
- High Sensitivity 0.4Lux/F2.0
- S/N ration more than 48dB
- AWB/ AGC
- 3.6mm/4.3mm/ 6mm/8mm/12mm lens option
- Blooming free
- Built in reverse protection

Installation

Turning the cover to adjust the viewing angle at 360°.

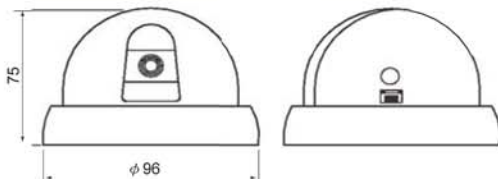


No need to open the cover, a hole on the right side of cover, with a screwdriver to adjust the viewing angle of lens to up & down at 90°.

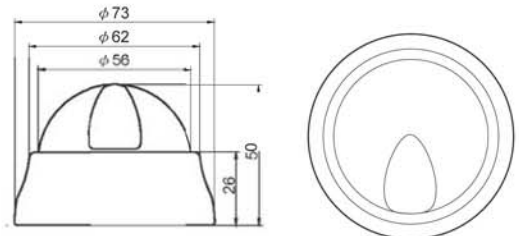
DC~

- Stylish compact design (2")
- SONY CCD
- 330TVL above
- High Sensitivity 0.4Lux/F2.0
- S/N ration more than 48dB
- AWB/ AGC
- 3.6mm/4.3mm/ 6mm/8mm/12mm lens option
- Blooming free
- Built in reverse protection

Dimensions unit: mm



Dimensions unit: mm



1/3" Color CCD Dome Camera Specification

Model	DR-STN	DR-SHN	DR-SQHN
	DR-STP	DR-SHP	DR-SQHP
Chip Brand	SONY		
Effective Pixels	NTSC: 510(H) x 492(V) PAL: 500(H) x 582(V)	NTSC: 768(H) x 494(V) PAL: 752(H) x 582(V)	NTSC: 768(H) x 494(V) PAL: 752(H) x 582(V)
SYNC. System	Internal		
Resolution	More Than 330TV Line	More Than 480TV Line	More Than 520TV Line
Minimum Illumination	0.4Lux/F2.0/50IRE	0.8Lux/F2.0/50IRE	0.8Lux/F2.0/50IRE
S/N Ratio (AGC OFF)	More Than 48dB		
Gamma Correction	0.45		
Gain Control	Auto		
White Balance	Auto (2500°K~9500°K)		
Exposure	Auto E.Shutter: 1/60(1/50) ~1/100000 Sec		
Video Output	1.0 Vp-p Composite (75Ω Load)		
Supply Voltage	DC12V ± 10%		
Power Consumption	100mA	170mA	180mA
Operation Temp.	-10°C~+50°C		
Lens Type	3.6mm / F2.0 Board Lens		
Dimension (DxH)	96 x 75mm		
Weight (g)	126	190	200
Lens Option	4.3mm/F2.0 ; 6mm/F1.8 ; 8.0mm/F2.0 ; 12mm/F2.0		

* Specifications subject to change without notice.

Model	DC-STN
	DC-STP
Chip Brand	SONY
Effective Pixels	NTSC: 510(H) x 492(V) PAL: 500(H) x 582(V)
SYNC. System	Internal
Resolution	More Than 330TV Line
Minimum Illumination	0.4Lux/F2.0/50IRE
S/N Ratio (AGC OFF)	More Than 48dB
Gamma Correction	0.45
Gain Control	Auto
White Balance	Auto (2500°K~9500°K)
Exposure	Auto E.Shutter: 1/60(1/50) ~1/100000 Sec
Video Output	1.0 Vp-p Composite (75Ω Load)
Supply Voltage	DC12V ± 10%
Power Consumption	100mA
Operation Temp.	-10°C~+50°C
Lens Type	3.6mm / F2.0 Board Lens
Dimension (DxH)	73 x 50mm
Weight (g)	100
Lens Option	4.3mm/F2.0 ; 6mm/F1.8 ; 8.0mm/F2.0 ; 12mm/F2.0

* Specifications subject to change without notice.