

Full HD Multiple Streaming Compact IP Dome Camera Quick Guide

The quick guide is for quick installing and connecting the Full HD Compact IP Dome Camera. For details, please refer to the camera's user manual.

PoE Connection

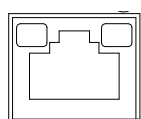
Please follow the instructions below to complete the Ethernet connection of IP Dome Camera.

Indoor Camera

Before connecting the Ethernet Cable, please open the dome cover first. Connect the one end of the PoE cable to the Ethernet port on the camera, and the other end to Power Sourcing Equipment (PSE) like hubs or routers.



NOTE: Check the status of the link indicator and activity indicator LEDs; if the LEDs are unlit, please check LAN connection.



Green Link Light indicates good network connection.

Orange Activity Light flashes for network activity indication.



NOTE: Please use the RJ-45 connector without the booth cover when using the Indoor IP Camera.

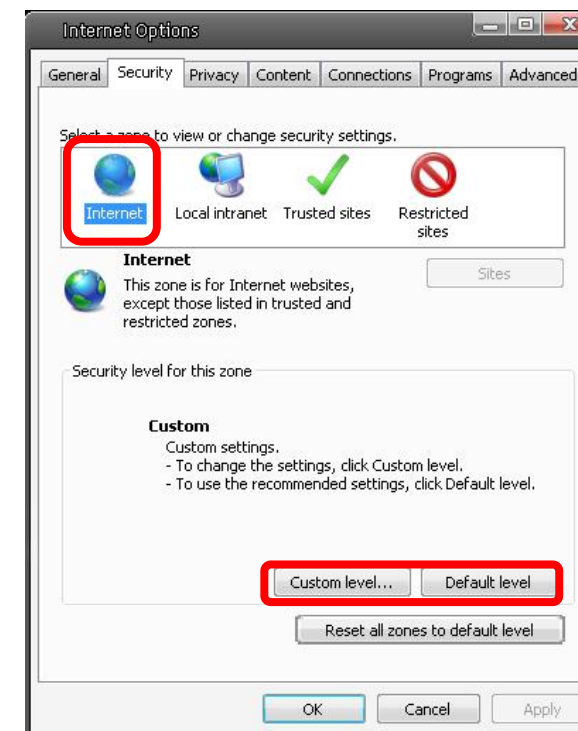
Rugged Camera

For the Rugged IP Dome Camera, connect its Ethernet cable to a M12/RJ-45 waterproof switch. Please refer to the IP Dome Camera's user manual for further details.

Before Login to the IP Dome Camera

A client program will be automatically installed on your PC when connecting to the IP Dome Camera. Before accessing to the IP Dome Camera, please ensure downloading the ActiveX control is allowed by either changing the ActiveX controls and plug-ins or setting Internet's security level to default. For further details, please refer to the IP Dome Camera's user manual.

ActiveX Controls and Plug-ins Settings	Internet Security Level
<p>Step 1: Start the Internet Explorer (IE).</p> <p>Step 2: Select <Tools> from the main menu of the browser. Then Click <Internet Options>.</p> <p>Step 3: Click the <Security> tab and select "Internet", and click <Custom level> to change ActiveX settings.</p> <p>Step 4: Set "ActiveX controls and plug-ins" items to <Prompt> or <Enable>.</p>	<p>Step 1: Start the IE.</p> <p>Step 2: Select <Tools> from the main menu of the browser. Then Click <Internet Options>.</p> <p>Step 3: Click the <Security> tab and select "Internet."</p> <p>Step 4: Down the page, press "Default Level" and click "OK" to confirm the setting. Close the browser window, and open a new one later for accessing the IP Dome Camera</p>



IP Dome Camera Login

The IP Dome Camera's default IP address is: **192.168.0.250**. Therefore, to access the IP Dome Camera for the first time, set the PC's IP address as: 192.168.0.XXX; for example:

IP Address: 192.168.0.100

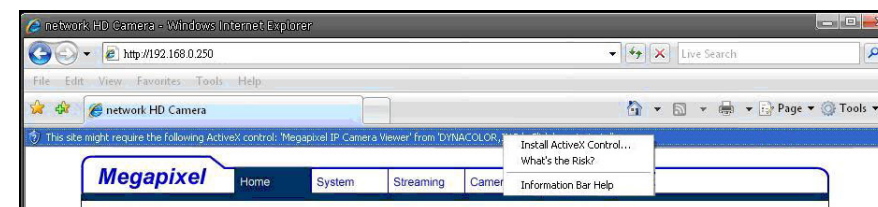
Subnet Mask: 255.255.255.0

Login ID & Password

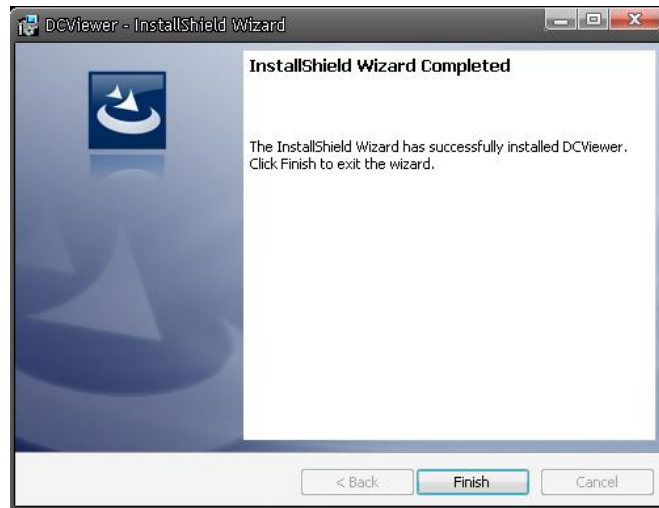
- Key in the IP Dome Camera's IP address in the URL bar of the Web browser window and press "Enter."
- Enter the default user name (**Admin**) and password (**1234**) in the prompt request dialogue. Note that user name is case sensitive.

Install the ActiveX control

- After connecting to the IP Dome Camera, the request for installing the ActiveX control will appear just below the URL bar.
- Right Click on the information bar, and press "Install ActiveX Control..." to permit ActiveX control installation.



- In the pop-up security warning window, click “Install” to start downloading DC Viewer software on the PC.
- Press “Finish” when DC Viewer installation is complete.



Full HD Multiple Streaming Compact IP Dome Camera Quick Guide

Browser-based Viewer

The main page of the IP Camera user interface is as shown below. Please note that the function buttons will vary depending on the camera model.



Ver1.1